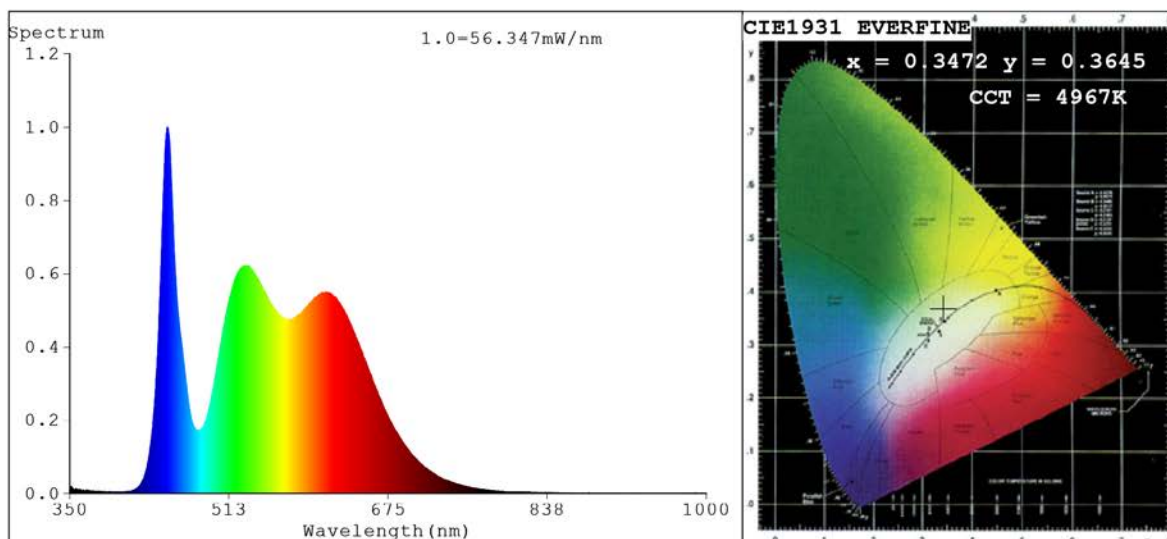


## Spectrum Test Report



### Color Parameters:

Chromaticity Coordinate:  $x=0.3472$   $y=0.3645$   $u'=0.2079$   $v'=0.4911$   
 CCT=4967K (Duv=0.0055) Dominant WL:Ld =568.8nm Purity=13.5%  
 Ratio:R=17.3% G=78.8% B=3.9%;;Peak WL:Lp=449.5nm FWHM=19.0nm  
 Render Index:Ra=90.3 CRI=85.1 TM30:Rf=89 Rg=101  
 R1 =93 R2 =90 R3 =87 R4 =92 R5 =91 R6 =86 R7 =95  
 R8 =89 R9 =62 R10=75 R11=90 R12=58 R13=92 R14=92 R15=90

### Photo Parameters:

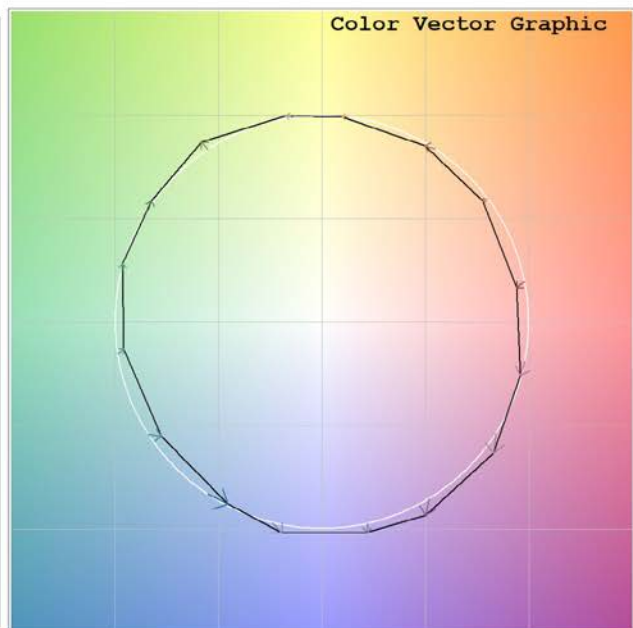
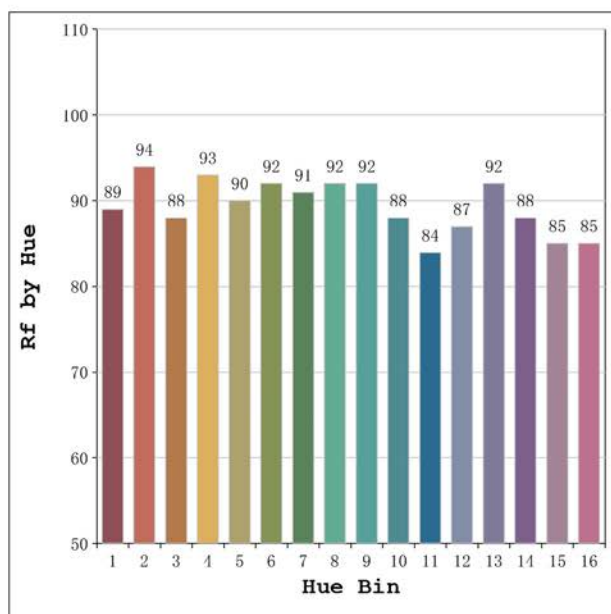
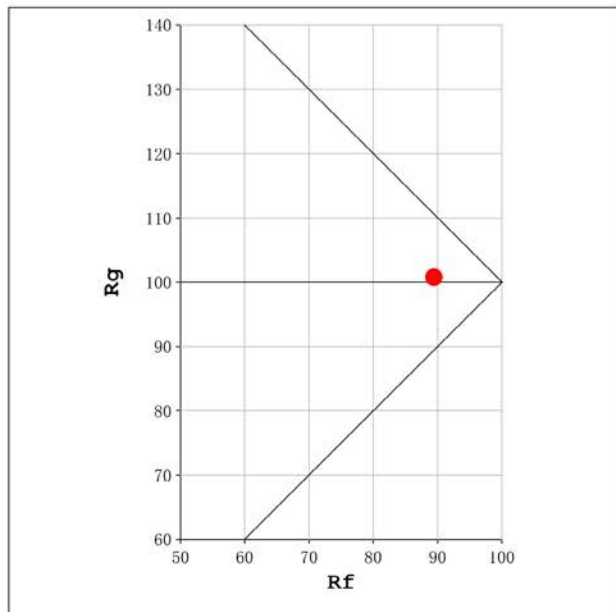
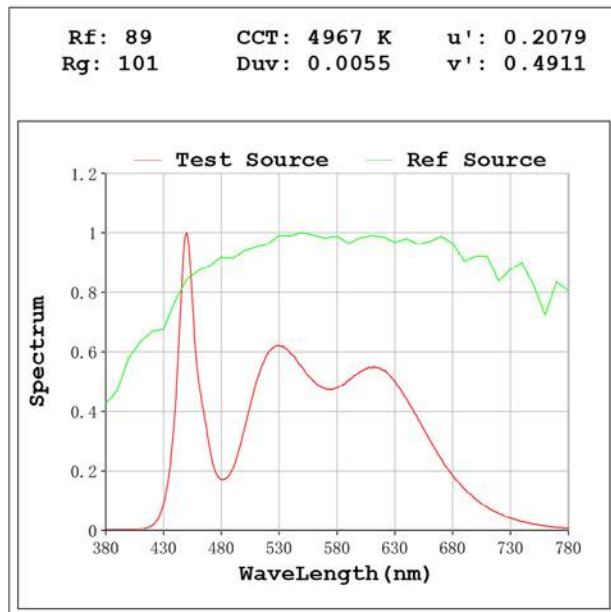
Flux = 2104 lm Eff. : 107.82 lm/W Fe = 6.781 W

### Electrical parameters:

V = 23.998 V I = 0.8131 A P = 19.51 W PF = 1.000

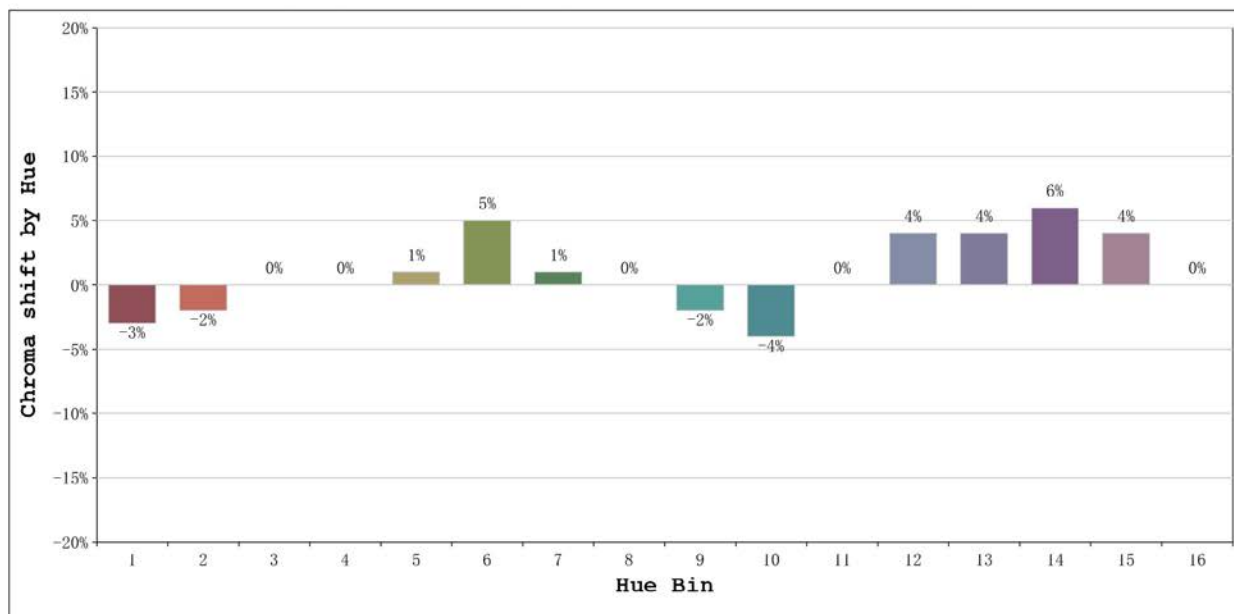
Status: Integral T = 667 ms Ip = 46206 (71%)

Model:Ecoled Élite 20 Gold 5000	Number: 31.182
Tester:Sergio Carneros	Date:2025-02-12 15:44:26
Temperature:20Deg	Humidity:50%
Manufacturer:Luz Negra	Remarks:100cm de tira flexible



Model:Ecoled Élite 20 Gold 5000  
 Tester:Sergio Carneros  
 Temperature:20Deg  
 Manufacturer:Luz Negra

Number: 31.182  
 Date:2025-02-12 15:44:26  
 Humidity:50%  
 Remarks:100cm de tira flexible



			Graphic shift(%)	
Hue Bin	Hue Angle	Rf	Chroma	Hue
1	0.0° - 22.5°	89	-3	-1
2	22.5° - 45.0°	94	-2	0
3	45.0° - 67.5°	88	0	5
4	67.5° - 90.0°	93	0	3
5	90.0° - 112.5°	90	1	3
6	112.5° - 135.0°	92	5	0
7	135.0° - 157.5°	91	1	-3
8	157.5° - 180.0°	92	0	-3
9	180.0° - 202.5°	92	-2	-1
10	202.5° - 225.0°	88	-4	4
11	225.0° - 247.5°	84	0	11
12	247.5° - 270.0°	87	4	5
13	270.0° - 292.5°	92	4	0
14	292.5° - 315.0°	88	6	-5
15	315.0° - 337.5°	85	4	-8
16	337.5° - 360.0°	85	0	-6

Model:Ecoled Élite 20 Gold 5000 Number: 31.182  
 Tester:Sergio Carneros Date:2025-02-12 15:44:26  
 Temperature:20Deg Humidity:50%  
 Manufacturer:Luz Negra Remarks:100cm de tira flexible